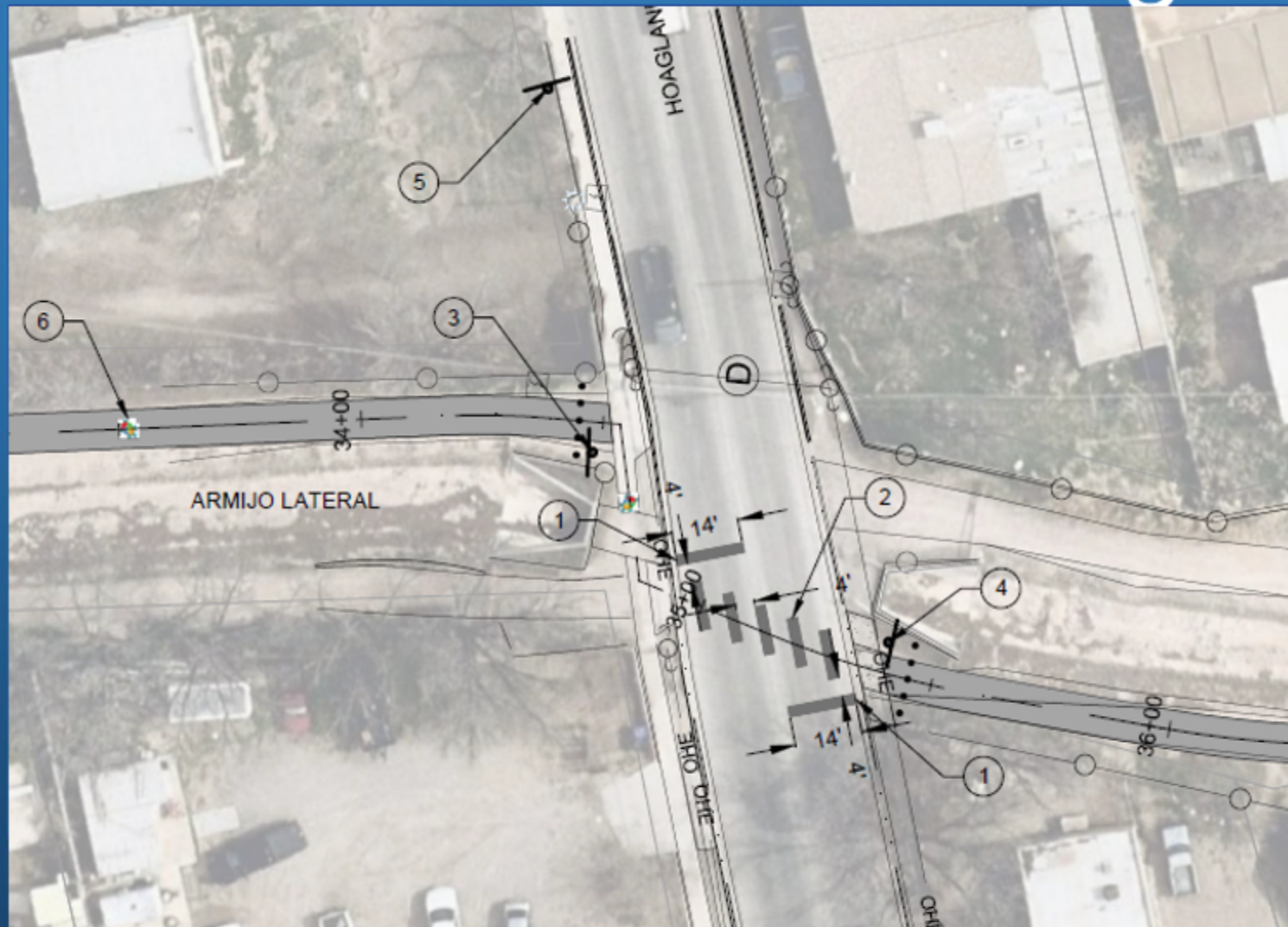


Trail Crossing Example

12



KEY NOTES

- ① 24" SOLID WHITE REFLECTORIZED HOT THERMOPLASTIC STRIPE (STOP BAR)
- ② 24" SOLID WHITE REFLECTORIZED HOT THERMOPLASTIC STRIPE (CONTINENTAL CROSSWALK)
- ③ INSTALL NEW - STOP SIGN (R1-1) ON POST WITH BREAKAWAY SLEEVE. REFER TO CLC TRAFFIC STANDARDS FOR INSTALLATION DETAIL.
- ④ INSTALL NEW - COMBINATION CROSSWALK SIGN WITH ADVANCE WARNING (W11-15 AND W16-9P) ON POST WITH BREAKAWAY SLEEVE. REFER TO CLC TRAFFIC STANDARDS FOR INSTALLATION DETAIL.
- ⑤ INSTALL NEW - COMBINATION CROSSWALK SIGN WITH ARROW (W11-15 AND W16-7P) ON POST WITH BREAKAWAY SLEEVE. REFER TO CLC TRAFFIC STANDARDS FOR INSTALLATION DETAIL.
- ⑥ CITY OF LAS CRUCES TURTLE MARKING SHALL BE PAINTED WITH REFLECTORIZED PAINT AND SHALL BE PLACED EVERY 250 FEET OR AS NEEDED BETWEEN STA: 31+00 TO 36+00. (PERMISSION SHALL BE REQUIRED PRIOR TO INSTALLING WITHIN NMDOT RIGHT-OF-WAY). REFER TO SHEET 600 FOR MARKING DETAIL.