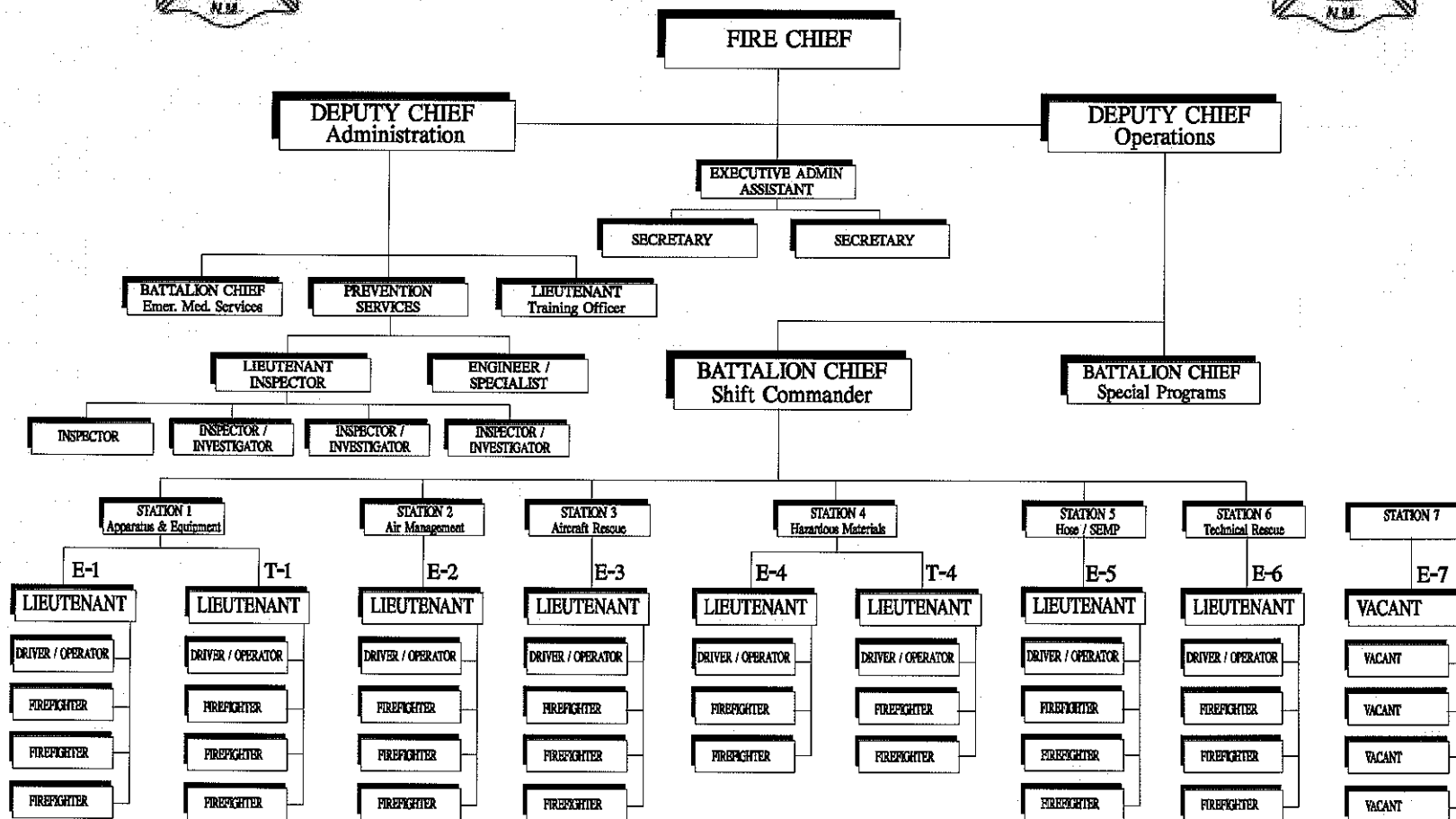




Las Cruces Fire Department

ORGANIZATIONAL STRUCTURE

July 1, 2009



THIS CHART FROM THE RANK OF BATTALION CHIEF - SHIFT COMMANDER DOWN REFLECTS THE ORGANIZATIONAL STRUCTURE FOR ONE SHIFT ONLY. THERE ARE THREE SHIFTS WITH A MAXIMUM STAFFING OF 37 PERSONNEL EACH.